

Echo, Foundry & ColorSource

PRODUCT REFERENCE

visual environment technologies | etconnect.com



Product Name

Model Number

Device Specific Notes

"-#" = A device that counts against the active power supply.
Supported device count when power supply in device is **OFF**.

"+#" = A device that powers other devices.
Supported device count when power supply in device is **ON**.


CONTROL

count used or created by device

OUTPUT

count used or created by device

AUX CONSUMED

power consumed by device

AUX GENERATED

power generated by device

INPUT PROTOCOLS

input control protocols

OUTPUT PROTOCOLS

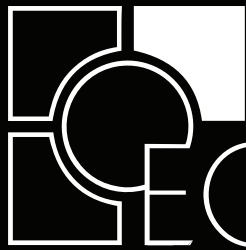
output control protocols

SPACES

number of supported spaces

PRESETS

number of supported presets



ECHO

The logo consists of a stylized 'E' formed by a circle and two squares. The circle is positioned in the center, overlapping the bottom-right corner of the left square and the top-left corner of the right square. The word 'ECHO' is written in a clean, white, sans-serif font to the right of the graphic.

EchoConnect Protocol Guidelines

- Up to 16 control and 16 output products per segment
- Control products are bus powered unless 24V Auxiliary power is noted
- One Station Power Supply is required/supported per segment
- Up to 1640 feet of control wiring using Belden 8471 (or equal)
- Up to 1000 feet of control wiring using Category 5 cable and optional termination kits

EchoTouch Mk2 Controller

ETS

- Fits in any 3-gang box
- 7-in. color touchscreen
- Configured via internal menus or offline editor
- Supports up to 80 channels
- Direct interaction with up to 16 Echo spaces
- Internal TimeClock supports up to 80 real time or astronomical events



OUTPUT	-1
AUX CONSUMED	-750mA or PoE
INPUT PROTOCOLS	EchoConnect
OUTPUT PROTOCOLS	EchoConnect DMX/RDM sACN Art-Net
SPACES	1
PRESETS	64

Inspire Control Stations

E1001 - 1 Button

E1002 - 2 Button

E1004 - 4 Button

E1006 - 6 Button

E1008 - 8 Button

E1104 - 4 Button w/Fader

- Defaults to zone control of one space
- Zone, preset, and custom modes



CONTROL

-1

INPUT
PROTOCOLS

EchoConnect

Preset Stations

EPS05 - 5 Button

EPS10 - 10 Button

- Defaults to preset control of one space
- Preset and custom modes



CONTROL

-1

INPUT
PROTOCOLS

EchoConnect

Keyswitch Station

EPSKS

- Defaults to lock stations in one space
- Supports any button action when programmed with EchoAccess



CONTROL

-1

INPUT
PROTOCOLS

EchoConnect

Dual Tech Switch-Mount Occupancy and Vacancy Sensor Station

E-DOC-SM1

1 Button, 15° field, 30-ft. x 180° coverage

E-DOC-SM2

2 Button, 15° field, 30-ft. x 180° coverage

- Sensors support occupancy and vacancy events
- Buttons configured in EchoAccess
- Passive infrared and acoustic sensing



CONTROL

-1

INPUT
PROTOCOLS

EchoConnect

Ceiling Mount Dual Tech Occupancy and Vacancy Sensor

E-DOC-C-SR / E-DVAC-C-SR

Small Room, 450 sq. ft. @ 8 ft.; 800 sq. ft. @ 12 ft.

E-DOC-C-LR / E-DVAC-C-LR

Large Room, 1800 sq. ft. @ 8 ft.; 3000 sq. ft. @ 12 ft.

E-DOC-C-HC

High Ceiling, 300 sq. ft. @ 10 ft.; 7000 sq. ft. @ 40 ft.

- Occupancy Sensors support occupancy and vacancy events
- Vacancy sensors support vacancy only
- Passive infrared and acoustic sensing



CONTROL

-1

INPUT
PROTOCOLS

EchoConnect

PIR Occupancy and Vacancy Sensor

E-OCC-SR / E-VAC-SR

Small Room, 450 sq. ft. @ 8 ft.; 800 sq. ft. @ 10 ft.

E-OCC / E-VAC

Large Room, 1800 sq. ft. @ 8 ft.; 3000 sq. ft. @ 10 ft.

E-OCC-HC / E-VAC-HC

High Ceiling, 300 sq. ft. @ 10 ft.; 7000 sq. ft. @ 40 ft.

- Occupancy sensors support occupancy and vacancy events
- Vacancy sensors support vacancy only
- Sensing via passive infrared



CONTROL

-1

INPUT
PROTOCOLS

EchoConnect

Wall Mount Dual Tech Occupancy and Vacancy Sensor

E-DOC-W-NR / E-DVAC-W-NR

Narrow wall - 40° field, 16-ft. x 75-ft. coverage @ 7-ft. to 10-ft. height

E-DOC-W-WD / E-DVAC-W-WD

Wide wall - 140° field, 60° coverage @ 7-ft. to 10-ft. height

- Occupancy sensors support occupancy and vacancy events
- Vacancy sensors support vacancy events only
- Passive infrared and acoustic sensing



CONTROL

-1

INPUT
PROTOCOLS

EchoConnect

Light Sensor

ELS - Controller with Remote Sensor Head

ELSC - Controller only

ELSH - Remote Sensor Head

- Supports remote head mounting up to 1000-ft apart
- Stations support two sensor averaging
- Zone control through EchoAccess
- Remote Sensor Heads are outdoor rated



CONTROL

-1

INPUT
PROTOCOLS

EchoConnect

EchoAccess Interface

E-ACC

- Works with the EchoAccess App
- Connection via Bluetooth LE
- Can only configure devices within a segment
- Apps for iOS and Android



* *The first EchoAccess Interface does not count against the number of control products*

CONTROL

0/-1*

AUX
CONSUMED

-50mA

INPUT
PROTOCOLS

EchoConnect

TimeClock Station

E-ATC

- 50 real-time or astronomical events
- Supports spaces connected to bus
- Supports Auto-time hold
- Title 24 Compliant



CONTROL

-1

AUX
CONSUMED

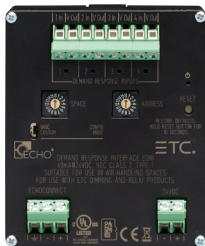
-40mA

INPUT
PROTOCOLS

EchoConnect

Demand Response Interface EDRI

- Connect 4 wet or dry contact inputs
- Supports maintained input
- Each contact toggles demand response for a configured space
- LED indicators show contact status



CONTROL

-1

AUX
CONSUMED

-40mA

INPUT
PROTOCOLSEchoConnect
Contact Input

Contact Input Interface

ECII

- Connects wet or dry contact inputs
- Supports:
 - Maintained contact
 - Momentary contact
- LED indicators show contact status



CONTROL

-1

AUX
CONSUMED

-40mA

INPUT
PROTOCOLSEchoConnect
Contact input

BACnet Interface

EBI

- Supports real-time Echo status to BACnet IP system
- Reports all Echo control points
- Accepts standard BACnet commands



CONTROL

-1

AUX
CONSUMED-100mA
or PoEINPUT
PROTOCOLSEchoConnect
BACnet IPOUTPUT
PROTOCOLS

BACnet IP

SPACES

16

Echo Integration Interface

EII

- Provides bi-directional communication of UDP string commands
- Reports real-time Echo system status to third-party systems via UDP



CONTROL

-1

AUX
CONSUMED-100mA
or PoEINPUT
PROTOCOLSEchoConnect
UDPOUTPUT
PROTOCOLS

UDP

SPACES

16

Expansion Bridge

EEB

- Connects up to 4 Echo segments for combined control
- Extends control and output counts by connecting segments
- EchoAccess control of all segments via third-party wireless access point
- Supports communication from a Paradigm Control System
- Max of 1 per Echo system. Max of 16 when integrating Echo into Paradigm Systems.



AUX
CONSUMED

-100mA
or PoE

INPUT
PROTOCOLS

EchoConnect

SPACES

16

PRESETS

16

Contact Output Interface

ECOI

- Connects 4 relay outputs
- Supports
 - N.O. Normally Open
 - N.C. Normally Closed
- Outputs rated for 2A @ 30VDC/VAC



OUTPUT	-1
--------	----

AUX CONSUMED	-40mA
--------------	-------

INPUT PROTOCOLS	EchoConnect
-----------------	-------------

OUTPUT PROTOCOLS	Contact Output
------------------	----------------

SPACES	1
--------	---

PRESETS	16
---------	----

Echo-Echoflex Interface

EEI

- Connects 4 Echoflex inputs to 4 Echo presets or zones
- Connects 4 Echo zone presets to 4 Echoflex power products



OUTPUT	-1
--------	----

AUX CONSUMED	-50mA
--------------	-------

INPUT PROTOCOLS	EchoConnect Echoflex
-----------------	-------------------------

OUTPUT PROTOCOLS	Echoflex
------------------	----------

SPACES	1
--------	---

PRESETS	16
---------	----

DMX Scene Controller

EDMXC

- Supports DMX:
 - Recording of DMX input to an Echo Preset
 - Zone control of DMX devices
- Input DMX levels pass-through to the DMX output and supports HTP with active internal levels
- Live playback of DMX levels stored in Echo presets
- DMX snapshot recording of incoming DMX to an Echo preset



OUTPUT	-1
--------	----

AUX CONSUMED	-150mA
--------------	--------

INPUT PROTOCOLS	EchoConnect
-----------------	-------------

OUTPUT PROTOCOLS	DMX - 1 Universe
------------------	------------------

SPACES	1
--------	---

PRESETS	32
---------	----

Relay Controllers (Gen 2)

ERC-G2 Single Zone

EDRC-G2 Dual Zone

- Single 120-277VAC, 20A power input
- 1/2-in. knockout mount
- Fully-rated 20A relay(s)
- Dual-relay unit uses continuous zone addresses



OUTPUT

-1

INPUT
PROTOCOLS

EchoConnect

SPACES

1

PRESETS

16

0-10V Controller (Gen 2)

ELD-G2 Single Zone

EDLD-G2 Dual Zone

- Single 120-277VAC, 20A power input
- 1/2-in. knockout mount
- Fully-rated 20A relay(s)
- Dual-relay unit uses continuous zone addresses



OUTPUT

-1

INPUT
PROTOCOLS

EchoConnect

OUTPUT
PROTOCOLS

0-10V

SPACES

1

PRESETS

16

SmartSpace Controllers (Gen 2)

ESSC-G2 Single Zone

EDSSC-G2 Dual Zone

- Single 120-277VAC, 20A power input
- 1/2-in. knockout mount
- Fully-rated 20A relay(s)
- Dual-relay unit uses continuous zone addresses
- Provides 50mA of 24VDC to allow the connection of a third-party responsive control device



OUTPUT

-1

AUX
GENERATED

+50mA

INPUT
PROTOCOLS

EchoConnect
Contact Input

OUTPUT
PROTOCOLS

0-10V

SPACES

1

PRESETS

16

600-watt Dimmers, 120V (Gen 2)

ELVD-G2 , ELVD-G2-MLV

- Single 20A, 120V power input
- 1/2-in. knockout mount
- Supports loads up to 600W
- Available in Phase-Adaptive and Forward-Phase variants
- **Phase-Adaptive Dimmer:** forward- or reverse-phase dimming for electronic low-voltage (ELV), incandescent, and fluorescent loads
- **Forward-Phase Dimmer:** forward-phase dimming for magnetic low-voltage loads



OUTPUT

-1

INPUT PROTOCOLS

EchoConnect

SPACES

1

PRESETS

16

600-watt Dimmers, 277V (Gen 2) ELVD-277-G2 , ELVD-277-G2-MLV

- Single 20A, 277V power input
- 1/2-in. knockout mount
- Supports loads up to 600W
- Available in Phase-Adaptive and Forward-Phase variants
- **Phase-Adaptive Dimmer:** forward- or reverse-phase dimming for electronic low-voltage (ELV), incandescent, and fluorescent loads
- **Forward-Phase Dimmer:** forward-phase dimming for magnetic low-voltage loads



OUTPUT

-1

INPUT
PROTOCOLS

EchoConnect

SPACES

1

PRESETS

16

Echo Room Controller (Gen 2)

ERMC4-G2

ERMC8-G2

- 4 or 8 circuits
- Max 20A per circuit
- Supports 120 and 277VAC branch circuit input per relay
- Counts as an output product
- UL 924 Listed with Class 2 Panic Circuit input and Normal Sense input
- 0-10V isolation comes standard
- Available in surface- and flush-mount options

**Additions only with integrated power supply enabled*



CONTROL	+6*
OUTPUT	+5* or -1

INPUT PROTOCOLS	EchoConnect Contact Input Demand Response
OUTPUT PROTOCOLS	EchoConnect 0-10V
SPACES	Up to 4 / 8
PRESETS	16

Echo Room Controller w/TimeClock (Gen2)

ERMT4-TC-G2**ERMT8-TC-G2**

- 4 or 8 circuits
- Max 20A per circuit
- Supports 120 and 277VAC branch circuit input per relay
- 0-10V isolation kit option available
- Integrated time clock consumes 1 control
- UL 924 Listed with Class 2 Panic Circuit input and Normal Sense input
- 0-10V isolation comes standard
- Available in surface- and flush-mount options

**Additions only with integrated power supply enabled*

**CONTROL**

+5* or -1

OUTPUT

+5* or -1

INPUT PROTOCOLSEchoConnect
Contact Input
Demand Response**OUTPUT PROTOCOLS**EchoConnect
0-10V**SPACES**

Up to 4 / 8

PRESETS

16

Unison DRd with Echo Control E-SPM-A EchoConnect and Aux

- Supports 100, 120, 230, or 277VAC main feed power input
- Supports all DRd options
- Counts as one output product
- Supports Unison Dimming Modules
- A complete system uses Unison DRd, E-ACP, and optional E-SPM-A
- UL 924 Listed with Class 2 Panic Circuit input

* *With installed option*



CONTROL

+16 w/SPM

OUTPUT

+15 w/SPM

AUX
GENERATED

+1500mA
w/SPM-A

INPUT
PROTOCOLS

DMX
EchoConnect
sACN*

OUTPUT
PROTOCOLS

EchoConnect
0-10V*
DALI*

SPACES

16

PRESETS

64

Sensor3 with CEM3

CEM3

- 120, 230, and 240VAC options
- 6-, 12-, 24-, and 48-module versions
- UL 924 Listed with Class 2 Panic Circuit input

**Additions only with integrated power supply enabled*



CONTROL	+6*
OUTPUT	+5* or -1

INPUT PROTOCOLS	DMX x2 EchoConnect sACN
SPACES	16
PRESETS	128

Sensor IQ Intelligent Breaker Panel IQ

- 120 or 277VAC main feed, bi- or three-phase
- Integrated Echo TimeClock
- 12, 24, or 48 position breaker panels
- Breaker options:
15A, 20A, or 30A
1, 2, or 3 poles
- UL 924 Listed with Class 2 Panic Circuit input

* With installed option

**Additions only with integrated power supply enabled



CONTROL

+6**

OUTPUT

+5 or -1**

INPUT
PROTOCOLS

DMX
EchoConnect
sACN
Contact Input*

OUTPUT
PROTOCOLS

EchoConnect
0-10V*
DALI*

SPACES

16

PRESETS

64

Echo Relay Panel Feedthrough

ERP24-FT

ERP48-FT

- Supports 120 and 277VAC branch circuit input per relay
- Integrated Echo TimeClock
- 24-48 positions for 1- and 2-pole relays
- 480V double-pole relays
- UL 924 Listed with Class 2 Panic Circuit input

* With installed option

**Additions only with integrated power supply enabled



CONTROL	+6**
---------	------

OUTPUT	+5** or -1
--------	------------

INPUT PROTOCOLS	DMX EchoConnect sACN Contact Input*
-----------------	--

OUTPUT PROTOCOLS	EchoConnect 0-10V* DALI*
------------------	--------------------------------

SPACES	16
--------	----

PRESETS	64
---------	----

Echo Relay Panel Mains Feed ERP

- Supports 120 or 277VAC main feed power input
- Integrated Echo TimeClock
- 24 positions for 1-, 2-, and 3-pole relays
- 5 constant circuits available
- Supports 300W phase-adaptive dimmers for ELV loads
- UL 924 Listed with Class 2 Panic Circuit input

* With installed option

**Additions only with integrated power supply enabled



CONTROL	+6**
OUTPUT	+5** or -1

INPUT PROTOCOLS	DMX EchoConnect sACN Contact Input*
OUTPUT PROTOCOLS	EchoConnect 0-10V* DALI*
SPACES	16
PRESETS	64

DIN Rail Station Power Supply with Aux E-SPS-DIN

- EchoConnect bus power supply
- 24VDC Aux power supply
- 100-240VAC power input



CONTROL

+16

OUTPUT

+16

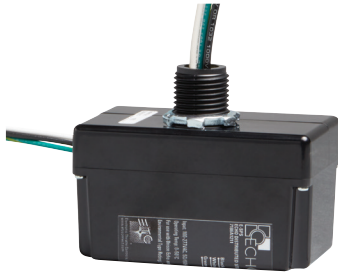
AUX
GENERATED

+1500mA

Station Power Supply

E-SPS

- Mounts to a standard 1/2-in. knockout
- Provides EchoConnect bus power
- 100-277VAC power input

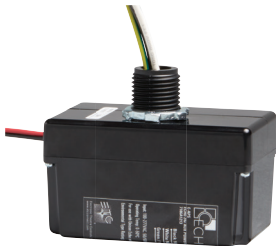


CONTROL	+6
OUTPUT	+6

Aux Power Supply

E-APS

- Mounts to a standard 1/2-in. knockout
- Provides 24VDC Auxiliary power
- 100-277VAC power input



AUX
GENERATED

+160mA



Foundry DMX Relay Controller

UFR2

- Mounts to a standard 1/2-in. knockout
- Switched control of 1 or 2 circuits
- Single 120-277VAC, 20A power input
- Two fully-rated 20A relays



CONTROL

2
DMX addressesINPUT
PROTOCOLS

DMX/RDM

Foundry DMX Relay with 0-10V UFR2-LV

- Mounts to a standard 1/2-in. knockout
- Switched control of 1 or 2 circuits
- Single 120-277VAC, 20A power input
- Two fully-rated 20A relays



CONTROL

2
DMX addressesINPUT
PROTOCOLS

DMX/RDM

OUTPUT
PROTOCOLS

0-10V

Foundry 600-watt Dimmers, 120V UFD, UFD-MLV

- Mounts to a standard 1/2-in. knockout
- Supports loads up to 600W
- Single 120VAC, 20A power input
- Available in Phase-Adaptive and Forward-Phase variants
- **Phase-Adaptive Dimmer:** forward- or reverse-phase dimming for electronic low-voltage (ELV), incandescent, and fluorescent loads
- **Forward-Phase Dimmer:** forward-phase dimming for magnetic low-voltage loads



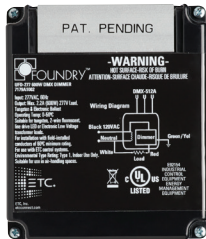
CONTROL

1
DMX addressINPUT
PROTOCOLS

DMX/RDM

Foundry 600-watt Dimmers, 277V UFD-277, UFD-277-MLV

- Mounts to a standard 1/2-in. knockout
- Supports loads up to 600W
- Single 277VAC, 20A power input
- Available in Phase-Adaptive and Forward-Phase variants
- **Phase-Adaptive Dimmer:** forward- or reverse-phase dimming for electronic low-voltage (ELV), incandescent, and fluorescent loads
- **Forward-Phase Dimmer:** forward-phase dimming for magnetic low-voltage loads



CONTROL

1
DMX addressINPUT
PROTOCOLS

DMX/RDM

Foundry Mini Panels

UFMP4

UFMP8

- 4 or 8 circuits configurable as switched or constant powered with 0-10V control per relay
- Max 20A line voltage per circuit
- Supports 120 or 277VAC branch circuit input per relay
- UL 924 Listed with Class 2 Panic Circuit input and Normal Sense input
- Available in surface- and flush-mount options



CONTROL	1-8 DMX addresses
----------------	----------------------

INPUT PROTOCOLS	DMX/RDM Demand Response
OUTPUT PROTOCOLS	0-10V

ColorSource

DMX Transmitter

CST-W

- Wired DMX In and Wireless DMX Out
- Configurable Wireless ID to connect to up to 32 receivers per transmitter
- Wireless Range = 100 meters line of sight
- Transmits in the 2.4GHz range



AUX
CONSUMED

12VDC
supply included

INPUT
PROTOCOLS

Wired
DMX/RDM

OUTPUT
PROTOCOLS

Wireless
DMX/RDM

Wireless DMX Receiver

CSR-W

- Wireless DMX In / Wired DMX Out
- PowerCon Input and Output
- 32 receivers per transmitter
- Wireless Range = 100 meters line of sight
- Contains one 16A switching relay
- Relay modes:
 - Auto** - On when DMX Present
- Off after 5 minutes of no DMX
 - DMX** - On when DMX level above 50
- Off when below 50
 - RDM** - On and off via RDM command
- Supports 90-250VAC power input



CONTROL	1 DMX address
---------	------------------

INPUT PROTOCOLS	Wireless DMX/RDM
OUTPUT PROTOCOLS	Wired DMX/RDM

Wired DMX Relay

CSR-D

- DMX In and Thru
- PowerCon Power Input and Output
- Contains one 16A switching relay
- Relay modes:
 - Auto** - On when DMX Present
 - Off after 5 minutes of no DMX
 - DMX** - On when DMX level above 50
 - Off when below 50
 - RDM** - On and off via RDM command
- Supports 90-250VAC power input



CONTROL

1
DMX addressINPUT
PROTOCOLS

Wired DMX/RDM

Raceway

CSR-L-Q-C-X-T-H

L = location, Q = quantity of connector, X = quantity of circuits,
T = terminal box, H = hanger type

- Each section contains two connector panels supporting multiple types of power and data connectors
- Terminal box supports up to six 20A circuits and one DMX or Ethernet data input
- Terminal box can be configured for hardwired or connectorized power and data input
- Active DMX pass-thru, supports up to 32 DMX/RDM devices
- Supports 90-250VAC power input



Discontinued

EchoTouch Controller

ETS

- Fits in any 3-gang back box
- 7-in. color touchscreen
- Configured via internal menus or offline editor
- Supports up to 16 Echo control zones
- Supports up to 40 DMX control zones



OUTPUT	-1
---------------	----

AUX CONSUMED	-750mA or PoE
---------------------	---------------

INPUT PROTOCOLS	EchoConnect
------------------------	-------------

OUTPUT PROTOCOLS	EchoConnect DMX/RDM sACN Art-Net
-------------------------	---

SPACES	1
---------------	---

PRESETS	64
----------------	----

Echo Room Controller (Gen 1)

ERMC4

ERMC8

- 4 or 8 circuits
- Max 20A per circuit
- Supports 120 or 277VAC branch circuit input per relay
- 0-10V isolation kit option available
- Counts as an output product
- UL 924 Listed with Class 2 Panic Circuit input

**Additions only with integrated power supply enabled*



CONTROL	+6*
OUTPUT	+5* or -1

INPUT PROTOCOLS	EchoConnect AVContact Closure Demand Response
OUTPUT PROTOCOLS	EchoConnect 0-10V
SPACES	1
PRESETS	16

OUTPUT PRODUCT

Echo Room Controller w/TimeClock (Gen 1)

ERMC4-TC

ERMC8-TC

- 4 or 8 circuits
- Max 20A per circuit
- Supports 120 or 277VAC branch circuit input per relay
- 0-10V isolation kit option available
- Integrated time clock consumes 1 control
- Counts as an output *and* a control product
- UL 924 Listed with Class 2 Panic Circuit

**Additions only with integrated power supply enabled*



CONTROL	+5* or -1
OUTPUT	+5* or -1

INPUT PROTOCOLS	EchoConnect AVContact Closure Demand Response
OUTPUT PROTOCOLS	EchoConnect 0-10V
SPACES	1
PRESETS	16

Unison DRd with Echo Control E-SPM - EchoConnect only

- Supports 100, 120, 230, or 277VAC main feed power input
- Supports all DRd options
- Counts as one output product
- Supports Unison Dimming Modules
- A complete system uses Unison DRd, E-ACP, and optional E-SPM (-A)
- UL 924 Listed with Class 2 Panic Circuit input

* With installed option



CONTROL

+16 w/SPM

OUTPUT

+15 w/SPM

AUX
GENERATED

+1500mA
w/SPM-A

INPUT
PROTOCOLS

DMX
EchoConnect
sACN*

OUTPUT
PROTOCOLS

EchoConnect
0-10V*
DALI*

SPACES

16

PRESETS

64

Wall-Mount Station Power Module

E-SPM-WM

E-SPM-WM-A

- 100-240VAC power input

E-SPM-WM

- EchoConnect only

E-SPM-WM-A

- EchoConnect
- Aux power



CONTROL

+16

OUTPUT

+16

AUX
GENERATED+1500mA
E-SPM-WM-A only

Rack-Mount Station Power Module

E-SPM-RM

E-SPM-RM-A

- 100-240VAC power input

E-SPM-RM

- EchoConnect only

E-SPM-RM-A

- EchoConnect
- Aux power



CONTROL	+16
OUTPUT	+16
AUX GENERATED	+1500mA <i>E-SPM-RM-A only</i>



Corporate Headquarters ■ Middleton, WI USA

Global Offices ■ London, UK ■ Rome, IT ■ Holzkirchen, DE ■ Paris, FR ■ Hong Kong ■ Dubai, UAE ■
Singapore ■ New York, NY ■ Orlando, FL ■ Los Angeles, CA

Copyright©2020 ETC. All Rights Reserved. All product information and specifications subject to change. 7186L1028 Rev B 11/20

Trademark and patent info: etconnect.com/IP

etconnect.com