

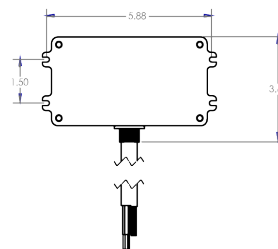
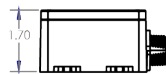
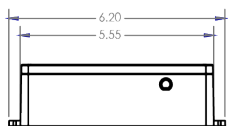
MeshSmart Wireless Universal Port (WUP) Controller

The MeshSmart's MSW-UP-310 is an intelligent wireless network connected lighting controller with dimming, ON/OFF switching, utility grade energy metering, remote monitoring/management, sensor input capabilities and more. MS-WUP-310 has multiple sensor inputs and 12VDC output to power sensor(s). Its exceptional fault tolerance and control persistency with constant status and health monitoring of your lighting fixtures. Its compact design with waterproof feature enables mounting inside or outside a light fixture or pole.

Features

- Remote control, scheduling, and sensor configuration
- External Relay control signal output
- In-node scheduling: custom schedules are programmed to the node, with RTC built in each controller, schedules runs with or without wireless connectivity
- Revenue grade energy metering
- Multiple sensor input for motion and/or light sensing with 12VDC output for sensor(s)
- Two 0-10V dimming control allows changing in color temperature
- Linear continuous dimming - high resolution dimming (100+ steps)
- Remote programmable High-End Trim
- Reliable and encrypted communication
- Support over-the-air (OTA) updates to support future enhancements
- Flexible event based scheduling system
- Lighting fixture fault monitoring and reporting
- Self-forming and self-restoring wireless mesh network
- Integrates with MeshSmart LiteView and CityConnect

Dimensions



Order Code

Sample Order Code - MS-WUP-310-ZB-277-8-GRY

| Series | Wireless Type | Input Voltage | Pin Configuration | Color | Extra |
|------------|---------------|---------------------------------|-------------------|-------|-------------------------|
| MS-WUP-310 | ZB (ZigBee) | (277) 120-277V (480) 347-480V | 8 (8 class 2 pin) | GRY | A (w/ external antenna) |



Specifications

| | |
|------------------------|---|
| Voltage | 120-277VAC or 347-480VAC (+/- 10%) |
| Max Load Current | 10A @ 120-277VAC, 5A @ 347-480VAC |
| Operating Temperature | -40 to +50°C |
| IP | IP67 |
| Surge | 4KV |
| Radio Frequency | 2.4GHz - Excellent immunity to other 2.4 GHz devices for reliable co-existence |
| Dimming Output | 1-10V, 20mA, 2 channel |
| ON/OFF switch | Relay, zero crossing |
| Power Monitoring | Utility Grade - 2% Accuracy |
| Sensor Input | 1 digital and 1 analog input that can be used for motion-based, daylight and advanced lighting controls |
| Certifications | FCC, DLC, cULus |
| External Relay Control | Yes. 12V control signal |
| Warranty | 5 Years |